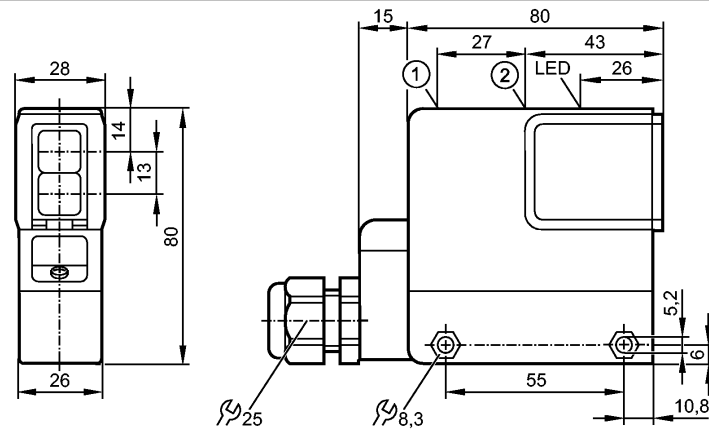


OS0025

OSR-FBOA

Photoelectric sensors



- 1: potentiometer timer
- 2: potentiometer sensitivity

Receiver in upper lens, transmitter in lower lens



Product characteristics

Retro-reflective sensor	
Rectangular, plastics	
Terminals	
Sensing range 10m (Prismatic reflector Ø 80 (E20005))	
adjustable	

Electrical data

Electrical design		AC/DC
Operating voltage [V]		20...250 AC/DC
Type of light		Infrared light 950 nm
Protection class		II
Reverse polarity protection		no

Outputs

Output function		light-on / dark-on programmable
Minimum load current [mA]		15
Leakage current [mA]		< 6
Current rating		
- Current rating (continuous) [mA]		250; 350 (...50 °C)
- Current rating (peak) [mA]		î: 2.2 A (10 ms / 0.5 Hz)
Short-circuit proof		no
Overload protection		no
Switching frequency [Hz]		250

Detection range

Sensing range [m]		10 (Prismatic reflector Ø 80 (E20005))
-------------------	--	--

Environment

Ambient temperature [°C]		-25...80
Protection		IP 65

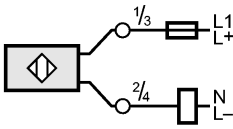
Tests / approvals

EMC		EN 60947-5-2
MTTF [Years]		302

OS0025

OSR-FBOA

Photoelectric sensors

Mechanical data	
Housing materials	modified PPO
Lens material	glass
Weight [kg]	0.268
Displays / operating elements	
Output status indication	LED yellow
Electrical connection	
Connection	terminals up to 1.5 mm ² ; cable diameter 5...10 mm, cable gland M20 x 1.5
Wiring	
	
Note: miniature fuse to IEC60127-2 sheet 1, ≤ 2 A (fast acting)	
Accessories	
Accessories (included)	Angle bracket; E20210; screwdriver
Remarks	
Remarks	Recommendation: check the unit for reliable function after a short circuit.
Pack quantity [piece]	1