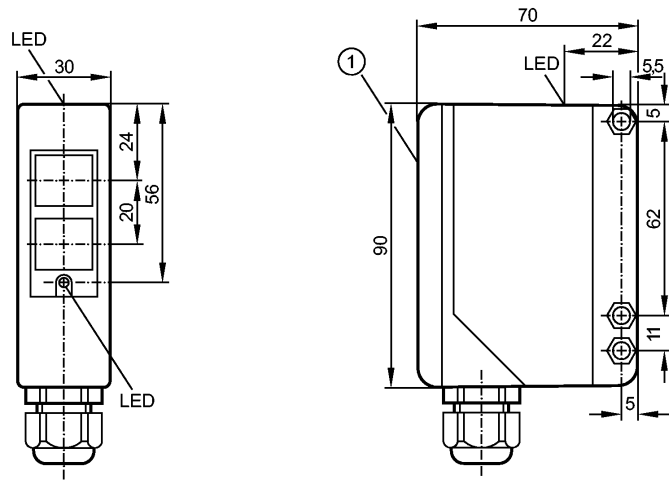


**OA5102**

OAE-FCKG

Photoelectric sensors



1: selection switch, pot's (under cover)

Receiver in upper lens



**Product characteristics**

Through-beam sensor
Rectangular, plastics
Terminals
Function check output
Receiver
Sensing range 50m
adjustable

**Electrical data**

Electrical design	DC PNP/NPN
Operating voltage [V]	10...36 DC
Current consumption [mA]	< 50
Type of light	Infrared light 880 nm
Protection class	II
Reverse polarity protection	yes

**Outputs**

Output function	light-on / dark-on programmable
-----------------	---------------------------------

**Current rating**

- Switching output [mA]	250
- dual output mode [mA]	100
- Function check output [mA]	10
Short-circuit protection	yes (non-latching)
Overload protection	yes
Switching frequency [Hz]	300

**Monitoring range**

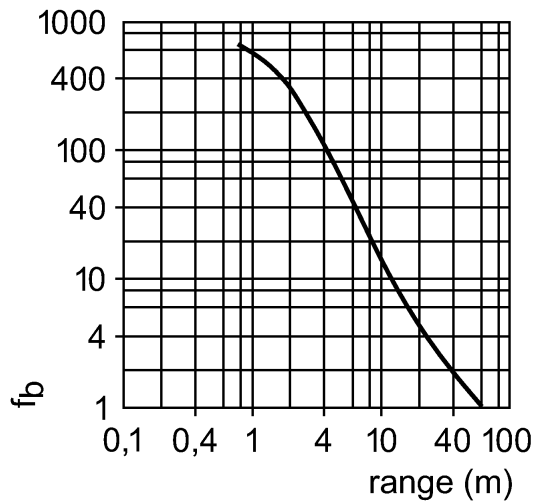
Sensing range [m]	50
-------------------	----

**Excess gain graphs**

## OA5102

OAE-FCKG

Photoelectric sensors



### Environment

Ambient temperature	[°C]	-25...60
Protection		IP 65

### Tests / approvals

EMC		EN 60947-5-2 EN 55011:	class B
MTTF	[Years]		399

### Mechanical data

Housing materials		modified PPO
Lens material		PMMA
Weight	[kg]	0.285

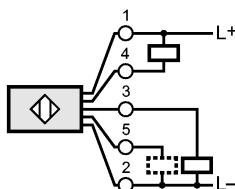
### Displays / operating elements

Output status indication	LED	yellow
Power	LED	green
Function display	LED	red

### Electrical connection

Connection	terminals up to 1.5 mm <sup>2</sup> ; cable diameter 4.5...10 mm, cable gland M16 x 1.5
------------	---

### Wiring



5: function check

### Accessories

Accessories (included)	Angle bracket; E20514; screwdriver
------------------------	------------------------------------

### Remarks

Pack quantity	[piece]	1
---------------	---------	---