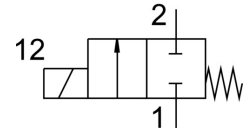
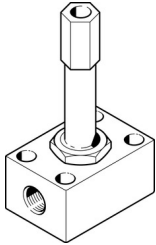


# Air solenoid valve MC-2-1/8

Part number: 2187

FESTO



## Data sheet

Feature	Value
Valve function	2/2, closed, monostable
Actuation type	Electrical
Standard nominal flow rate	300 l/min
Pneumatic working port	G1/8
Operating pressure	-0.95 bar ... 7 bar
Design	Poppet valve with return spring
Reset method	Mechanical spring
Certification	c CSA us (OL)
Degree of protection	IP65
Nominal width	4 mm
Type code	MC
Sealing principle	Soft
Manual override	None
Type of control	Direct
Flow direction	Non-reversible
Symbol	00991397
Switching time off	20 ms
On switching time	18 ms
Duty cycle	100%
Coil characteristics	110 V AC: 50/60 Hz, initial power 30.0 VA, holding power 22.0 VA 110 V DC: 12.7 W 120 V AC: 60 Hz, initial power 30.0 VA, holding power 22.0 VA 12 V AC: 50 Hz, initial power 30.0 VA, holding power 22.0 VA 12 V DC: 11.7 W 220 V AC: 50/60 Hz, initial power 30.0 VA, holding power 22.0 VA 220 V DC: 15.0 W 240 V AC: 50 Hz, initial power 30.0 VA, holding power 22.0 VA 240 V DC: 17.9 W 24 V AC: 50 Hz, initial power 30.0 VA, holding power 22.0 VA 24 V DC: 11.0 W 380 V AC: 50/60 Hz, initial power 30.0 VA, holding power 22.0 VA 42 V AC: 50/60 Hz, initial power 30.0 VA, holding power 22.0 VA 42 V DC: 12.0 W 48 V AC: 50 Hz, initial power 30.0 VA, holding power 22.0 VA 96 V DC: 11.0 W
Operating medium	Compressed air as per ISO 8573-1:2010 [7:4:4]
Storage temperature	-40 °C ... 100 °C
Temperature of medium	-10 °C ... 60 °C
Ambient temperature	-5 °C ... 40 °C
Type of mounting	With through-hole

<b>Feature</b>	<b>Value</b>
Pneumatic connection 1	G1/8
Pneumatic connection 2	G1/8
Note on materials	RoHS-compliant