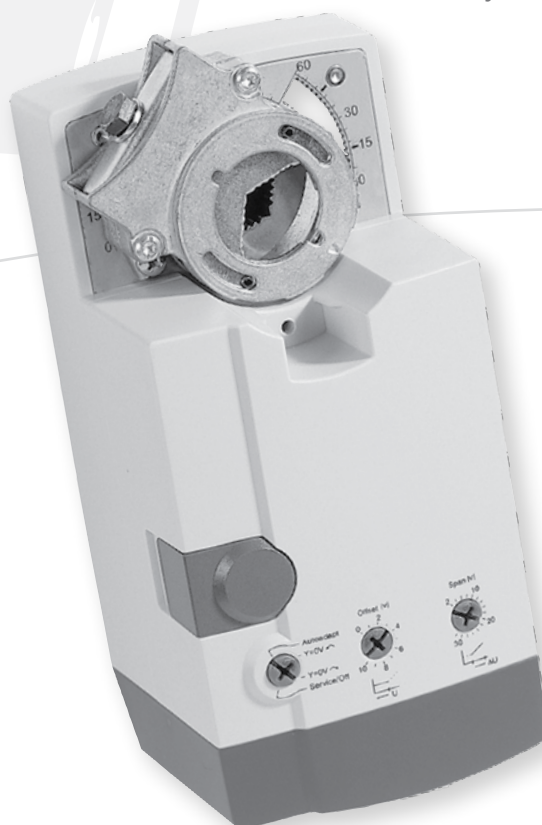


5



Actuators

Linear Actuators	5-2
Direct-Coupled Actuators	5-4
Fire & Smoke Damper Actuators	5-8
FATPA Accessories	5-9
Modutrol Motors	5-9
Modutrol Motor Accessories	5-12
Interface Modules & Linkages	5-13
Rotary Actuators	5-14





Linear Actuators

M7410C/E Small Linear Actuators



Small electric linear actuators for floating or modulating control. Applications are heating & air conditioning, zone control, fan coil units. Compatible valves include; V5822, V5823, V5825, V5832 and V5833. Motor includes 1.5m cable.

Voltage and Power	Control	Stem Force (N)	Features	Part Number	Stock/Indent
24Vac 0.7 VA	Floating	90	Stroke 2.5mm	M7410A1001	I
24Vac 0.7 VA	Floating	180	Stroke 6.5mm	M7410C1007	S
24Vac 0.7 VA	Floating	300	Stroke 6.5mm	M7410C1015	AUS
230Vac 7 VA	Floating	180	Stroke 6.5mm Manual Operation 2 Auxiliary Switches	M6410L4029	I
230Vac 7 VA	Floating	300	Stroke 6.5mm Manual Operation 2 Auxiliary Switches	M6410L4037	I
24Vac 1.4 VA	Modulating 0/2-10V	180	Stroke 6.5mm	M7410E1002	NZ
24Vac 1.4 VA	Modulating 0/2-10V	300	Stroke 6.5mm	M7410E1028	AUS
24Vac 1.4 VA	Modulating 0/2-10V	180	Stroke 6.5mm Manual Operation	M7410E2026	I
24Vac 1.4 VA	Modulating 0/2-10V	300	Stroke 6.5mm Manual Operation	M7410E2034	I

ML6435/ML7435 Linear Actuators



Electric linear actuators for floating or modulating control. Applications are heating & air conditioning with high differential pressure. Compatible valves include; V5825, V5832 and V5833. Motor is spring return (retracts) on power failure, has 6.5mm stroke and includes 1.5m cable.

Voltage and Power	Control	Stem Force (N)	Features	Part Number	Stock/Indent
24Vac 5VA	Floating	400	Stroke 6.5mm	ML6435B1008	AUS
230Vac 5VA	Floating	400	Stroke 6.5mm	ML6435B1016	I
24Vac 5VA	Modulating 0/2-10V	400	Stroke 6.5mm	ML7435E1004	I

ML6984/ML7984 Valve Actuators



Self-adjusting linear valve actuators. Mount directly onto valves; V5011A, C, F, G; V5013F and V5045. 1/2 to 3" water and steam threaded valves. Non-spring return. Compact size is ideal for unit heaters, FCUs, narrow ceiling plenums and computer room motorised valve applications.

Voltage and Power	Control	Stem Force	Features	Part Number	Stock/Indent
24Vac/dc 6VA run 12VA seat	Floating Non-Spring Return	710	13 - 25mm Adjustable stroke	ML6984A4000	I
24Vac or 28Vdc 6VA run 12VA seat	Modulating 0/2 - 10Vdc 4 - 20mA 0 - 135 ohms	710	13 - 25mm Adjustable stroke	ML7984A4009	I
			Auxiliary Switch 1 SPDT & 2-10Vdc feedback	272630D	I
			Replacement motor brush kit	272775	I



Linear Actuators

ML642x/ML742x Actuators



Electric Actuators for floating or modulating control of valves in heating and air conditioning systems. 24Vac 50/60 Hz. Compatible valves; V5011; V5013; V5049; V5050; V5328; V5329; V5088.

NOTE: B model Spring Return Actuator Stem retracts on power failure; A model extends.

Voltage and Power	Control	Stem Force	Features	Part Number	Stock/ Indent
24Vac 4VA	Floating Non-Spring Return	600	20mm Stroke	ML6420A3007-E	I
24Vac 11VA	Floating Spring Extend	600	20mm Stroke	ML6425A3006	I
24Vac 11VA	Floating Spring Retract	600	20mm Stroke	ML6425B3005	I
24Vac 12VA	Modulating 0/2 -10Vdc Spring Extend	600	20mm Stroke	ML7425A3013-E	S
24Vac 5VA	Modulating 0/2-10Vdc Non Spring Return	600	20mm Stroke	ML7420A6033-E	S
			High Temperature Kit for V5011P/R/S, (15-50mm) V5013P/R (15-50mm) and V5328A/V5329A (15-32mm)	43196000-001	I

ML6421/ ML7421 Electric Actuators



Electric Actuators for floating or modulating control of valves in heating and air conditioning systems. Manual adjustment. Compatible valves include V5011; V5013; V5049; V5050; V5328; V5329; V5088.

Voltage and Power	Control	Stem Force (N)	Features	Part Number	Stock/ Indent
24Vac 13VA	Floating Non-Spring Return	1800	20mm Stroke	ML6421A3005	NZ
24Vac 13VA	Floating Non-Spring Return	1800	38mm Stroke	ML6421B3004	I
24Vac 15VA	Modulating 0/2-10Vdc Non-Spring Return	1800	20mm Stroke	ML7421A1032-E	S
24Vac 15VA	Modulating 0/2-10Vdc Non-Spring Return	1800	38mm Stroke	ML7421B1023-E	S
			High Temperature Kit for V5328A/V5329A (40-80mm), V5049A (15-65mm), V5016A/V5025A/V5050A (15- 80mm)	43196000-002	I
			High Temperature Kit for flanged valves with 38mm stroke and ML6421B/ML7421B.	43196000-038	I



Direct-Coupled Actuators

M447/M847 Zone Damper Actuators



Zone damper actuators for direct mount to domestic butterfly/barrel or splitter box dampers. Drive open, spring return. Electrical Connection: 1 Metre Cable attached. M447C- gold coloured casing, M847 - silver coloured casing.

Voltage and Power	Timing (s)	Control Mode	Torque (Nm)	Part Number	Stock/Indent
240Vac 9.2VA	27 drive 25 return	2 Position Spring Return	0.34	M447B1005	AUS
230Vac 9.2VA	38 drive 25 return	2 Position Spring Return	0.5	M447C1004	AUS
24Vac 6.0VA	27 drive 25 return	2 Position Spring Return	0.34	M847B1014	AUS

DA02 Zone Damper Actuators



Zone damper actuators for direct mount to domestic butterfly/barrel or splitter box dampers. Drive Open/ Drive Closed (Non-Spring return). Electrical Connection: 1 Metre Cable attached. 8 year warranty.

Voltage and Power	Timing (s)	Control Mode	Torque (Nm)	Part Number	Stock/Indent
240Vac 5.0VA	24.0	Floating Bi-Directional Non Spring Return	1.5	DA0216A	AUS
24Vac 5.0VA	24.0	Floating Bi-Directional Non Spring Return	1.5	DA0211A	AUS

ML6161 Actuators



Direct coupled actuators for modulating or floating control of air dampers, ventilation flaps, louvers & VAV units. Non-Spring Return. Mounting round & square. Damper shafts 9.5 to 12.7mm, minimum shaft length 45mm.

Voltage and Power	Timing (s)	Control Mode	Torque (Nm)	Part Number	Stock/Indent
24Vac 4.0VA	108	Floating Non-Spring Return	4.0	ML6161B2024B	AUS



Direct-Coupled Actuators

N05 Non Spring Return SmartAct Damper Actuators



Direct coupled actuators which provide modulating or floating control for air dampers, ventilation flaps, louvers and VAV units, and for mounting on ball valves.

Non spring return. Self centering shaft adaptor. For round shafts 8-16mm; square shafts 6-13mm. Declutch for manual operation. Switch selectable rotation direction. For dampers with an area of 1 square metre. 5 year warranty.

Voltage and Power	Control Mode	Torque (Nm)	Features	Part Number	Stock/ Indent
24Vac 6VA	2 Position/Floating	5	Runtime 110s	CN6105A1011	S
24Vac 6VA	2 Position/Floating	5	Runtime 110s 2 Auxiliary Switches	N0524-SW2	AUS
230Vac 6VA	2 Position	5	Runtime max 110s	N05230-2POS	AUS
24Vac 6VA	Modulating 0/2- 10Vdc Floating 2 Position	5	Runtime 90-110s 0-10Vdc Feedback signal	CN7505A2001	S
24Vac 6VA	Modulating 0/2- 10Vdc Floating 2 Position	5	Runtime 90-110s 0-10Vdc Feedback signal 2 Auxiliary Switches	N05010-SW2	AUS

N10 Non Spring Return SmartAct Damper Actuators



Direct coupled actuators for modulating or floating control of air dampers, ventilation flaps, louvers and VAV units, and for mounting on ball valves.

Non spring return. Self centering shaft adaptor. For round shafts 8-16mm; square shafts 6-13mm. Declutch for manual operation. Switch selectable rotation direction. For dampers with an area of 2 square metres. 5 year warranty.

Voltage and Power	Control Mode	Torque (Nm)	Features	Part Number	Stock/ Indent
24Vac 6VA	2 Position/Floating	10	Runtime 110s	CN6110A1003	AUS
24Vac 6VA	2 Position/Floating	10	Runtime 110s 2 Auxiliary Switches	CN6110A1021	AUS
230Vac 6VA	2 Position	10	Runtime max 140s	N10230-2POS	I
24Vac 6VA	Modulating 0/2- 10Vdc Floating 2 Position	10	Runtime 90-110s 0-10Vdc Feedback signal	CN7510A2001	AUS
24Vac 6VA	Modulating 0/2- 10Vdc Floating 2 Position	10	Runtime 90-110s 0-10Vdc Feedback signal 2 Auxiliary Switches	CN7510A2209	AUS



Direct-Coupled Actuators

N20 Non Spring Return Smartact Damper Actuators



Direct coupled actuators for modulating or floating control of air dampers, ventilation flaps, louvers and VAV units, and for mounting on ball valves.

Non spring return. Self centering shaft adaptor. For round shafts 10-27mm; square shafts 10-18mm. Declutch for manual operation. Switch selectable rotation direction. For dampers with an area of 4 square metres. 5 year warranty.

Voltage and Power	Control Mode	Torque (Nm)	Features	Part Number	Stock/ Indent
24Vac 6VA	2 Position/Floating	20	Runtime 110s	CN6120A1002	S
24Vac 6VA	2 Position/Floating	20	Runtime 110s 2 Auxiliary switches	N2024-SW2	AUS
230Vac 6VA	2 Position/Floating	20	Runtime 110s	CN4620A1001	S
230Vac 6VA	2 Position/Floating	20	Runtime 110s 2 Auxiliary switches	N20230-SW2	AUS
24Vac 6VA	Modulating 0/2-10Vdc	20	Runtime 95s 0-10Vdc Feedback signal	CN7220A2007	S
24Vac 6VA	Modulating 0/2-10Vdc	20	Runtime 95s 0-10Vdc Feedback signal 2 Auxiliary switches	N20010-SW2	AUS

N34 Non Spring Return SmartAct Damper Actuators



Direct coupled actuators for modulating or floating control of air dampers, ventilation flaps, louvers, VAV units and for mounting on ball valves. For dampers with an area of 6 square metres.

Non spring return. Self centering shaft adaptor. For round shafts 10-27mm; square shafts 10-18mm. Declutch for manual operation. Switch selectable rotation direction. 5 year warranty.

Voltage and Power	Control Mode	Torque (Nm)	Features	Part Number	Stock/ Indent
24Vac 7VA	2 Position/Floating	34	Runtime 110s	CN6134A1003	AUS
230Vac 7VA	2 Position/Floating	34	Runtime 110s	CN4634A1001	AUS
24Vac 8VA	Modulating 0/2-10Vdc	34	Runtime 95s 0-10Vdc Feedback signal	CN7234A2008	AUS

N20 / N34 Auxiliary switch



End Switch for non spring return SmartAct damper actuators.

Actuator	Triggering Points	Switch Type	Voltage	Part Number	Stock/ Indent
N20/N34	5° / 85°	SPDT	24 Vac/dc, 5 A (R), 3 A (I)	SW2	AUS
N05/N10	5° / 85°	SPDT	24 Vac/dc, 5 A (R), 3 A (I)	SSW2	I



Direct-Coupled Actuators

S05 Spring Return SmartAct Damper Actuators



Direct-coupled spring return actuators which provide modulating or on/off control for air dampers, ventilation flaps, louvers, air handlers, VAV units and for mounting on ball valves. Models with auxiliaries available on request. Spring return. 5 year warranty.

Voltage and Power	Control Mode	Torque (Nm)	Features	Part Number	Stock/ Indent
24Vac 25VA - Run 8VA - Hold	2 Position	5	Drive Open Runtime 45s Spring Close Runtime 20s	S0524-2POS	AUS
230Vac 45VA - Run 13VA - Hold	2 Position	5	Drive Open Runtime 45s Spring Close Runtime 20s	S05230-2POS	AUS
24Vac 13VA - Run 5VA - Hold	Modulating 0/2-10Vdc	5	Drive Open Runtime 90s Spring Close Runtime 20s	MS7505A2008/U	AUS

S10 Spring Return SmartAct Damper Actuators



Direct-coupled spring return actuators which provide modulating or on/off control for air dampers, ventilation flaps, louvers, air handlers, VAV units and for mounting on ball valves. Models with auxiliaries available on request. Spring return. 5 year warranty.

Voltage and Power	Control Mode	Torque (Nm)	Features	Part Number	Stock/ Indent
24Vac 30VA - Run 8VA - Hold	2 Position	10	Drive Open Runtime 45s Spring Close Runtime 20s	S1024-2POS	AUS
24Vac 30VA - Run 8VA - Hold	2 Position	10	Drive Open Runtime 45s Spring Close Runtime 20s 2 Auxiliary Switches	S1024-2POS-SW2	AUS
230Vac 45VA - Run 13VA - Hold	2 Position	10	Drive Open Runtime 45s Spring Close Runtime 20s	S10230-2POS	AUS
24Vac 14VA - Run 5VA - Hold	Modulating 0/2-10Vdc	10	Drive Open Runtime 90s Spring Close Runtime 20s	S10010	AUS
24Vac 14VA - Run 5VA - Hold	Modulating 0/2-10Vdc	10	Drive Open Runtime 90s Spring Close Runtime 20s 2 Auxiliary Switches	S10010-SW2	AUS

S20 Smartact Damper Actuators



Direct-coupled spring return actuators which provide modulating or on/off control for air dampers, ventilation flaps, louvers and VAV units; and for mounting on ball valves. Spring return. 5 year warranty.

Voltage and Power	Control Mode	Torque (Nm)	Features	Part Number	Stock/ Indent
24Vac 40VA - Run 8VA - Hold	2 Position	20	Drive Open Runtime 45s Spring Close Runtime 20s	S2024-2POS	AUS
24Vac 40VA - Run 8VA - Hold	2 Position	20	Drive Open Runtime 45s Spring Close Runtime 20s 2 Auxiliary switches	S2024-2POS-SW2	AUS
230Vac 60VA - Run 13VA - Hold	2 Position	20	Drive Open Runtime 45s Spring Close Runtime 20s	S20230-2POS	AUS
24Vac 16VA - Run 5VA - Hold	Modulating 0/2-10V	20	Drive Open Runtime 90s Spring Close Runtime 20s	S20010	AUS
24Vac 16VA - Run	Modulating 0/2-10V	20	Drive Open Runtime 90s Spring Close Runtime 20s	S20010-SW2	AUS



Fire & Smoke Damper Actuators

ML4155/8115 Fast Acting Two Position Actuators



Fast acting, two position actuators for fire/smoke control applications, spring return, direct-coupled.

Designed to meet UL555S standards at 176°C. Mounting bracket sold separately (see below).
5 year warranty.

Voltage and Power	Torque (Nm)	Rotation Direction	Auxiliary Switches	Part Number	Stock/Indent
230Vac 18W - Running 11W - Holding	3.4	Counter Clockwise	External available	ML4115C1007	AUS
230Vac 18W - Running 11W - Holding	3.4	Clockwise	External available	ML4115D1006	AUS
24Vac 16W - Running 8W - Holding	3.4	Counter Clockwise	External available	ML8115A1005	AUS
24Vac 16W - Running 8W - Holding	3.4	Clockwise	External available	ML8115B1004	AUS

MS4809/4709/8309/8209 Fast Acting Two Position Actuators



Fast acting, two position actuators (FATPA) for fire/smoke control applications, spring return, direct-coupled.

Designed to meet UL555S standards at 176°C. Mounting bracket sold separately (see FATPA Accessories).

Voltage and Power	Torque (Nm)	Rotation Direction	Auxiliary Switches	Part Number	Stock/Indent
240Vac 23W - Running 7W - Holding	9	Counter Clockwise	External available	MS4809F1012	AUS
240Vac 23W - Running 7W - Holding	9	Clockwise	External available	MS4709F1014	AUS
24Vac 23W - Running 7W - Holding	9	Counter Clockwise	External available	MS8309F1001	AUS
24Vac 23W - Running 7W - Holding	9	Clockwise	External available	MS8209F1003	AUS

ML4620/8120 Fast Acting Two Position Actuators



Fast acting, two position actuators (FATPA) for fire/smoke control applications, spring return, direct coupled.
Designed to meet UL555S standards at 176°C.

Voltage and Power	Torque (Nm)	Rotation Direction	Auxiliary Switches	Part Number	Stock/Indent
230Vac 35W - Running 10W - Holding	20	CW/CCW Due to mounting	0 Internal High temperature indicator.	MS4620F1005	NZ
230Vac 35W - Running 10W - Holding	20	CW/CCW Due to mounting	2 Internal High temperature indicator.	MS4620F1203/B	AUS
24Vac 35W - Running 10W - Holding	20	CW/CCW Due to mounting	0 Internal	MS8120F1002/U	S
24Vac 35W - Running 10W - Holding	20	CW/CCW Due to mounting	2 Internal	MS8120F1200	I

Actuators



FATPA Accessories

FATPA Accessories

Accessories are available for the 3.4 and 9Nm FATPA models.

Details	Part Number	Stock/ Indent
Mounting Bracket	205649/U	S
External Auxiliary Switches	32003532-003	I

Modutrol Motors

M4185/M8185/M6285 2 Position Control Modutrol Motors



Modutrol motors are foot mounted motors that can be used to operate dampers and valves. Auxillary switches can be installed separately.

2 position or floating control, spring return, feedback signal available on M6285 models.

Voltage	Timing and Stroke	Torque	Control Mode	Part Number	Stock/ Indent
120Vac	30-60 sec 90-160°	6.8Nm	2 Position SPST Spring return	M4185A1001/U	I
24Vac	30-60 sec 90-160°	6.8Nm	2 Position SPST Spring return	M8185D1006/U	I
24Vac	30-60 sec 90-160°	6.8Nm	Floating Spring Return Non linear feedback signal for slaving applications	M6285A1005/U	AUS



Modutrol Motors

M6184/M6284/M6194/M6294 Floating Control Modutrol Motors



Modutrol motors are foot mounted motors that can be used to operate dampers and valves. Auxillary switches can be installed separately.

Floating control, non spring return, feedback signal available on M6284 and M6294 models.

Voltage	Timing and Stroke	Torque	Control Mode	Part Number	Stock/Indent
24Vac	30-60 sec 90-160°	8.5Nm	Floating Non spring return	M6184D1001/U	I
24Vac	30-60 sec 90-160°	17Nm	Floating Non spring return	M6184D1035/U	NZ
24Vac	2-4 min 90-160°	17Nm	Floating Non spring return	M6184D1068/U	I
24Vac	30-60 sec 90-160°	17Nm	Floating Non spring return Non linear feedback for slaving applications	M6284D1000/U	AUS
24Vac	30-60 sec 90-160°	17Nm	Floating Non spring return Linear 10k pot feedback signal	M6284D1032- F/U	NZ
24/120/230Vac	30-60 sec 90-160°	17Nm	Floating Non spring return Non linear feedback for slaving applications 2 internal auxillary switches	M6284F1062/U	I
24Vac	2-4 min 90-160°	34Nm	Floating Non spring return	M6194D1017/U	I
24Vac	2-4 min 90-160°	34Nm	Floating Non spring return Non linear feedback for slaving applications	M6294D1008/U	NZ

M7284Q/M7294Q Modulating Control Modutrol Motors



Modutrol motors are foot mounted motors that can be used to operate dampers and valves. Auxillary switches can be installed separately.

Modulating control, non spring return, no feedback signal available. Adjustable zero and span for split range applications.

Voltage	Timing and Stroke	Torque	Control Mode	Part Number	Stock/Indent
120Vac	30-60 sec 90-160°	17Nm	Modulating 4-20mA Adjustable zero & span Non spring return 2 internal auxillary switches	M7284Q1009/U	I
120Vac	30-60 sec 90-160°	34Nm	Modulating 4-20mA Adjustable zero & span Non spring return 2 internal auxillary switches	M7294Q1007/U	I



Modutrol Motors

M9164/M9174/M9184/M9194 Modulating Control Modutrol Motors



Modutrol motors are foot mounted motors that can be used to operate dampers and valves. Auxillary switches can be installed separately.

Modulating control, non spring return, no feedback signal available.

Voltage	Timing and Stroke	Torque	Control Mode	Part Number	Stock/ Indent
24Vac	30-60 sec 90-160°	4Nm	Modulating 0-135Ω Non spring return	M9164D1009/U	I
120Vac	30-60 sec 90-160°	8.5Nm	Modulating 0-135Ω Non spring return 2 internal auxiliary switches	M9174C1025/U	I
24Vac	30-60 sec 90-160°	17Nm	Modulating 0-135Ω Non spring return	M9184D1021/U	S
24Vac	30-60 sec 90-160°	34Nm	Modulating 0-135Ω Non spring return	M9194D1003/U	I
24Vac	30-60 sec 90-160°	34Nm	Modulating 0-135Ω Non spring return 1 internal auxiliary switch	M9194E1000/U	NZ

M9185 Modulating Control Modutrol Motors



Modutrol motors are foot mounted motors that can be used to operate dampers and valves. Auxillary switches can be installed separately.

Modulating control, spring return, no feedback signal available.

Voltage	Timing and Stroke	Torque	Control Mode	Part Number	Stock/ Indent
24Vac	30-60 sec 90-160°	6.8Nm	Modulating 0-135Ω Spring return	M9185D1004/U	S

M7284A/C Combustion Modutrol Motors



Modutrol motors are foot mounted motors that can be used to operate dampers and other equipment in combustion applications. Auxillary switches can be installed separately.

Modulating control, non spring return, no feedback signal available.

Voltage	Timing and Stroke	Torque	Control Mode	Part Number	Stock/ Indent
120Vac	30 sec 90°	17Nm	Modulating 4-20mA Fixed zero & span Non spring return	M7284A1004/U	I
120Vac	60 sec 160°	17Nm	Modulating 4-20mA Fixed zero & span Non spring return	M7284A1012/U	I
120Vac	30-60 sec 90-160° fixed zero & span	17Nm	Modulating 4-20mA Fixed zero & span Non spring return 2 internal auxiliary switches	M7284C1000/U	I



Modutrol Motors

M9484 Flame Safeguard Modutrol Motors



Modutrol motors are foot mounted motors that can be used to operate dampers and other equipment in combustion applications. Auxilliary switches can be installed separately.

Modulating control, non spring return, no feedback signal available.

Voltage	Timing and Stroke	Torque	Control Mode	Part Number	Stock/Indent
24Vac	30-60 sec 90-160°	17Nm	Modulating 0-135Ω Non spring return	M9484D1010/U	I
24Vac	30-60 sec 90-160°	17Nm	Modulating 0-135Ω Non spring return 1 internal auxiliary switch	M9484E1033/U	I
24Vac	30-60 sec 90-160°	17Nm	Modulating 0-135Ω Non spring return 2 internal auxiliary switches	M9484F1031/U	I

Modutrol Motors - Accessories

Modutrol IV Motors - Accessories

Range of accessories compatible with the Modutrol IV Motor range; auxilliary switches, adaptor bracket, crank arm, damper crank arm, resistor board, push rod, linkage ball joint, manual pot, transformers and interface module



Details	Part Number	Stock/Indent
Single auxilliary switch, mounted internally.	220736A	I
Dual auxilliary switch, mounted internally.	220736B	S
Adaptor bracket used to maintain original shaft height when replacing Mod III Motors.	220738A	S
Crank arm.	221455A	S
Resistor board for Series 90 Mod IV Motors. Adapts Series 90 motors for 4-20mA input or for driving motors in parallel	221508A	S
18" Push Rod 5/16 dia.	27520E	I
Damper crank arm for use with 1/2" DIA shaft.	26026G	I
Transformer for Mod IV motors, mounts internally. 110/240Vac input to 24Vac	198162AA	I
Linkage Ball Joint	315321	NZ
Heavy Duty crank arm for 34Nm Motors	4074ELR	NZ
Manual Pot 135 ohm, scale marked open/close	S963B1128	I
Transformer for Mod IV series2 motors Internally mounted. 24, 120, 240Vac dependent on wiring	50017460-001	S



Interface Modules & Linkages

Interface Modules



Modutrol IV voltage/current interface module. For converting series 90 Modutrol IV motors to series 70 (electronic) control. Use with M91XX Motors.

Type	Range	Part Number	Stock/Indent
Voltage Interface	4-7Vdc 6-9Vdc 10.5-13.5Vdc	Q7130A1006	I
Voltage and Current Interface	4-20mA 2-10 Vdc	Q7230A1005	S

Q605 Damper Linkages for Mod IV Motors

Damper linkages for Modutrol IV Motors, includes extra motor bracket, motor & damper crank arms, and ball joints. Order push rod, 27520E, separately.



Type	Motor Bracket	Components	Features	Part Number	Stock/Indent
Single Damper	Included	1 Damper arm 1 Motor crank arm 2 Ball joints		Q605F1018	I
Single Damper	Not included	1 Damper arm 1 Motor crank arm 2 Ball joints		Q605J1013	I
Dual Damper	Included	3 Damper arms 1 Motor crank arm 4 Ball joints	Includes left hand drive ear and crank arm adapter	Q605H1024	I

Q5001 Valve Linkages for Modutrol IV Motors

Valve linkages for Modutrol IV Motors to connect to a 2- or 3-way valve. It is used primarily on V5011 or V5013 steam & water valves.



Type	Motor	Stroke	Features	Part Number	Stock/Indent
356N Stem Force	Use with 6.8Nm or 8.5Nm motor	3/4" lift Fixed	Includes 1 3/8" valve bracket and anti spin clip	Q5001A1006	AUS
712N Stem Force	Use with 17Nm motor	3/4" lift Fixed	Includes 1 3/8" valve bracket and anti spin clip	Q5001A1014	S
712N or 1355 Stem Force	Use with 17Nm or 34Nm motor	3/4" lift Fixed	Includes 1 3/8" valve bracket and anti spin clip	Q5001D1018/U	I
712N or 1355 Stem Force	Use with 17Nm or 34Nm motor	1 1/2" lift Fixed	Includes 1 7/8" valve bracket and anti spin clip	Q5001D1026/U	I



Rotary Actuators

M6061/ M7061 Actuators



The M6061 actuator is designed to provide floating (or modulating) control of the DR family of rotary valves in heating and air-conditioning systems. Torque ranges from 10Nm to 40Nm and are available in line or low voltage.

Voltage and Power	Control	Torque	Valve size	Part Number	Stock/ Indent
24Vac 3.5 VA	Floating	10	15-40mm	M6061A1013	I
24Vac 3.5 VA	Floating	20	50-80mm	M6061A1021	I
24Vac 3.5 VA	Floating	30	100-125mm	M6061A1039	I
24Vac 3.5 VA	Floating	40	150-200mm	M6061A1047	I
230Vac 3.5 VA	Floating	10	15-40mm	M6061L1019	I
230Vac 3.5 VA	Floating	20	50-80mm	M6061L1027	I
230Vac 3.5 VA	Floating	30	100-125mm	M6061L1035	NZ
230Vac 3.5 VA	Floating	40	150-200mm	M6061L1043	I
24Vac 3.5 VA	Modulating 0/2- 10Vdc	10	15-40mm	M7061E1012	I
24Vac 3.5 VA	Modulating 0/2- 10Vdc	20	50-80mm	M7061E1020	I