

UPS25-40 N 180 1x230V 50Hz 9H

Grundfos Pump 96913060



Thank you for your interest in our products


Please contact us for more information, or visit our website

<https://www.lenntech.com/grundfos/UPSB1/96913060/UPS-25-40-N-180.html>

info@lenntech.com

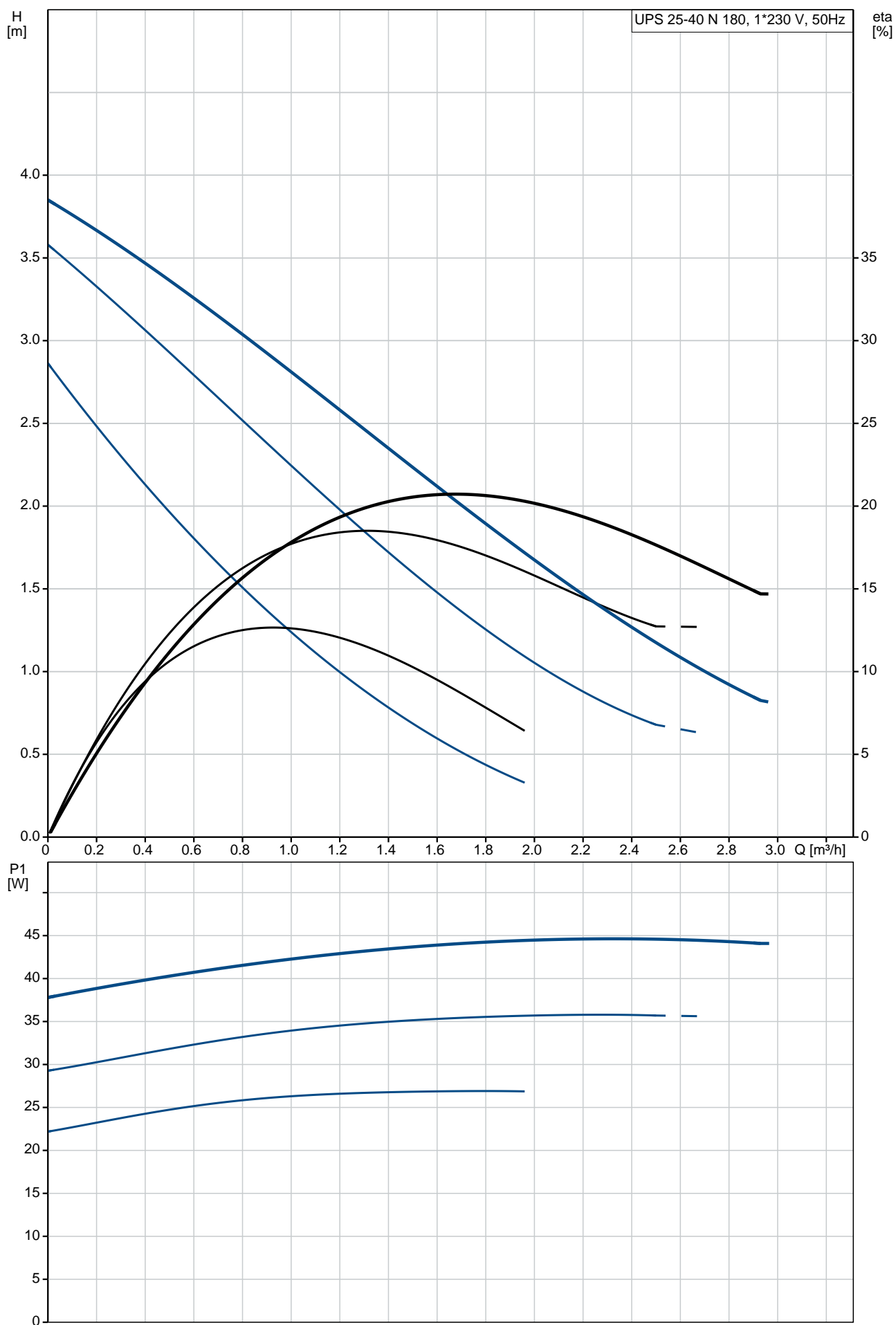
tel. +31-15-261.09.00

fax. +31-15-261.62.89

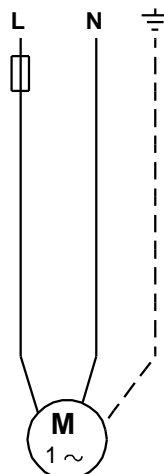
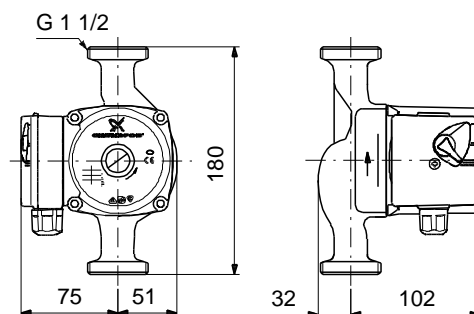
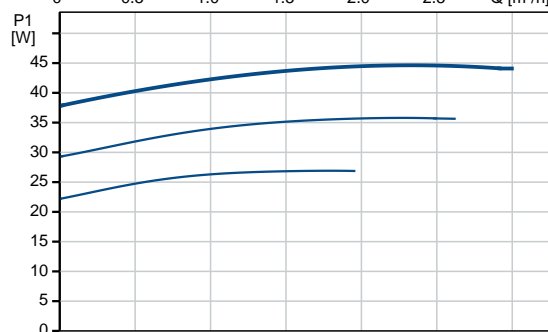
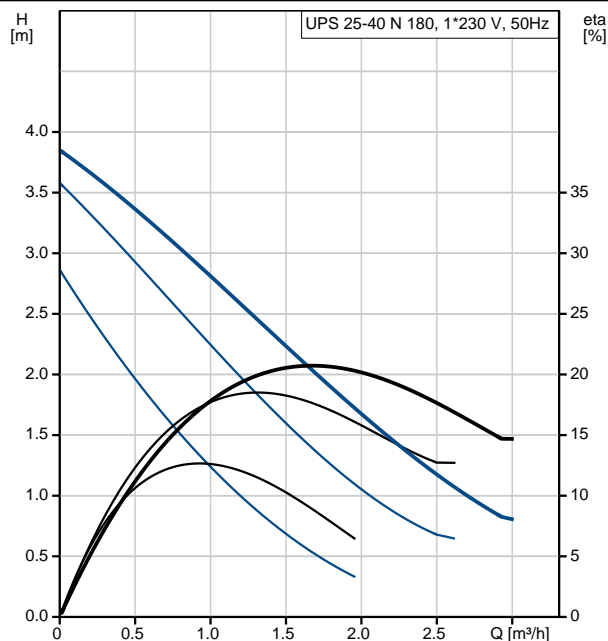
Position	Qty.	Description
	1	<p>UPS 25-40 N 180</p>  <p>Note! Product picture may differ from actual product</p> <p>Product No.: 96913060</p> <p>The pump is of the canned rotor type, i.e. pump and motor form an integral unit without shaft seal and with only two gaskets for sealing. The bearings are lubricated by the pumped liquid. The pump has 3-step speed selector.</p> <p>The pump is characterized by:</p> <ul style="list-style-type: none"> * Ceramic shaft and radial bearings. * Carbon axial bearing. * Stainless steel rotor can and bearing plate. * Corrosion-resistant impeller, Composite, PES/PP. * Stainless steel pump housing. <p>The motor is a 1-phase motor. No additional motor protection is required.</p> <p>Liquid:</p> <p>Pumped liquid: Water</p> <p>Liquid temperature range: 2 .. 110 °C</p> <p>Liquid temperature during operation: 60 °C</p> <p>Density: 983.2 kg/m³</p> <p>Technical:</p> <p>TF class: 110</p> <p>Approvals on nameplate: CE,VDE,EAC</p> <p>Materials:</p> <p>Pump housing: Stainless steel DIN W.-Nr. 1.4301</p> <p>Impeller: Composite, PES/PP</p> <p>Installation:</p> <p>Amb. max at 80 dgr C liquid: 40 °C</p> <p>Maximum operating pressure: 10 bar</p> <p>Pipe connection: G 1 1/2</p> <p>Pressure rating: PN 10</p> <p>Port-to-port length: 180 mm</p> <p>Electrical data:</p> <p>Power input in speed 1: 25 W</p> <p>Power input in speed 2: 35 W</p> <p>Max. power input: 45 W</p> <p>Mains frequency: 50 Hz</p> <p>Rated voltage: 1 x 230 V</p> <p>Current in speed 1: 0.12 A</p> <p>Current in speed 2: 0.16 A</p> <p>Current in speed 3: 0.2 A</p> <p>Capacitor size - run: 1.5 µF</p> <p>Enclosure class (IEC 34-5): IP44</p> <p>Insulation class (IEC 85): F</p>

Position	Qty.	Description
		Others: Net weight: 2.9 kg Gross weight: 3.1 kg Shipping volume: 0.004 m³ Danish VVS No.: 380481041 Swedish RSK No.: 5803098

96913060 UPS 25-40 N 180 50 Hz

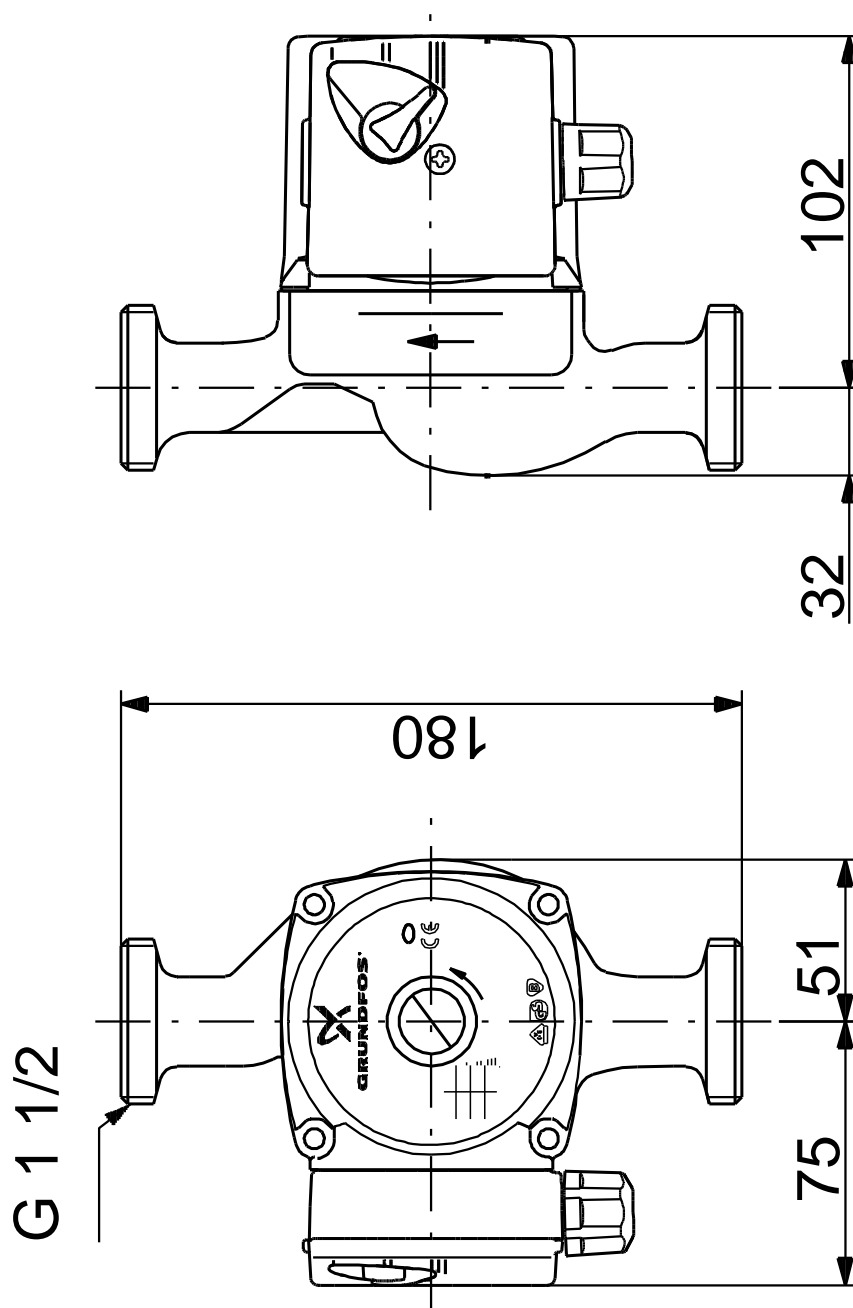


Description	Value
General information:	
Product name:	UPS 25-40 N 180
Product No:	96913060
EAN number:	5700313543083
Technical:	
Speed no:	3
Head max:	40 dm
TF class:	110
Approvals on nameplate:	CE,VDE,EAC
Materials:	
Pump housing:	Stainless steel
	DIN W.-Nr. 1.4301
Impeller:	Composite, PES/PP
Installation:	
Amb. max at 80 dgr C liquid:	40 °C
Maximum operating pressure:	10 bar
Pipe connection:	G 1 1/2
Pressure rating:	PN 10
Port-to-port length:	180 mm
Liquid:	
Pumped liquid:	Water
Liquid temperature range:	2 .. 110 °C
Liquid temperature during operation:	60 °C
Density:	983.2 kg/m³
Electrical data:	
Power input in speed 1:	25 W
Power input in speed 2:	35 W
Max. power input:	45 W
Mains frequency:	50 Hz
Rated voltage:	1 x 230 V
Current in speed 1:	0.12 A
Current in speed 2:	0.16 A
Current in speed 3:	0.2 A
Capacitor size - run:	1.5 µF
Enclosure class (IEC 34-5):	IP44
Insulation class (IEC 85):	F
Motor protec:	NONE
Thermal protec:	Impedance protected
Controls:	
Pos term box:	9H
Others:	
Net weight:	2.9 kg
Gross weight:	3.1 kg
Shipping volume:	0.004 m³
Danish VVS No.:	380481041
Swedish RSK No.:	5803098



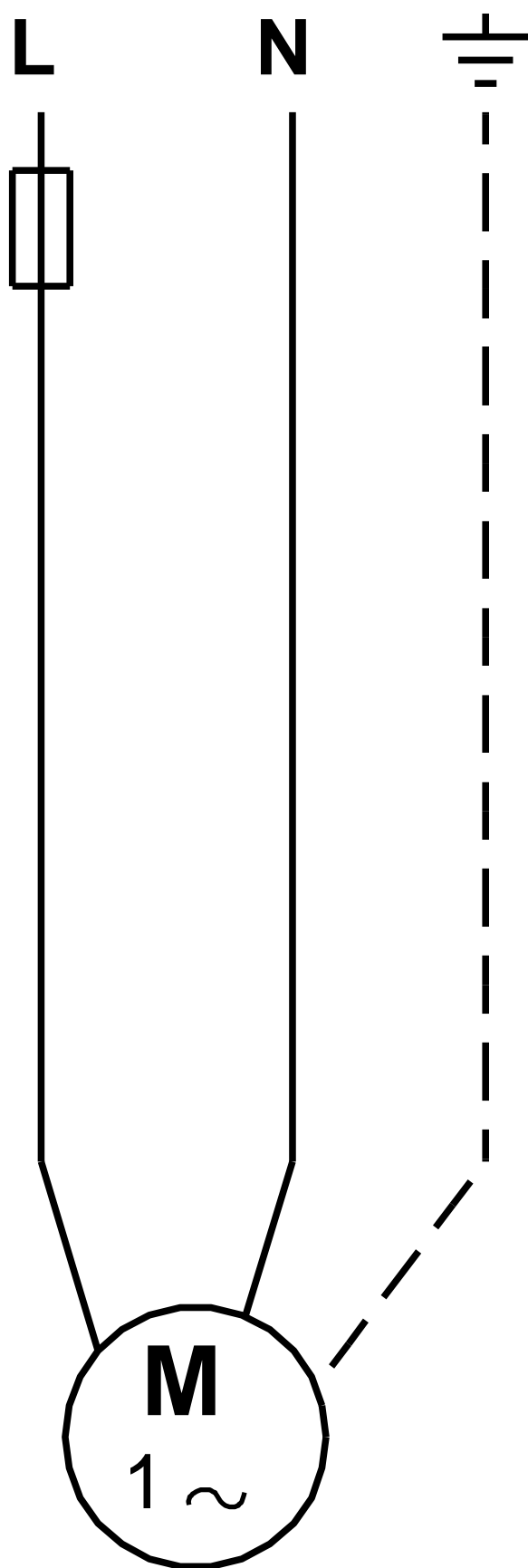
96913060 UPS 25-40 N 180 50 Hz

96913060 UPS 25-40 N 180 50 Hz



Note! All units are in [mm] unless others are stated.
Disclaimer: This simplified dimensional drawing does not show all details.

96913060 UPS 25-40 N 180 50 Hz



Note! All units are in [mm] unless others are stated.

*Disclaimer: The information about the Grundfos pump in this document may be outdated.
Data may be subject to alterations without further notice.
Please contact us to verify the data above is still accurate/up-to-date.*

All information is copyright Grundfos.



info@lenntech.com

www.lenntech.com

tel. +31-15-261.09.00

fax. +31-15-261.62.89