

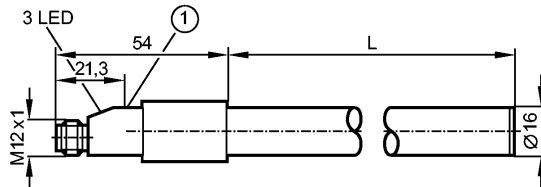
no longer available - archive entryreplaced by: LI2141

**efector160**  
LI2041



LI0132--K-00KNPKG/US

Level sensors



1: Programming button



Product characteristics

Binary level sensor

Quick disconnect

WHG § 19 approved

gold-plated contacts

Probe length: L = 132 mm

1 switching output

Application

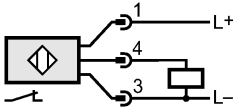
Application

	coolants / oils cannot be used for acids and alkalis
Medium temperature [°C]	0...65 *)
Electrical data	
Electrical design	DC PNP
Operating voltage [V]	10...36 DC
Current consumption [mA]	13 (24 V)
Protection class	II
Reverse polarity protection	yes
Outputs	
Output	1 switching output
Output function	normally closed
Current rating [mA]	250
Voltage drop [V]	< 2.5
Short-circuit protection	yes (non-latching)
Overload protection	yes
Switching frequency [Hz]	5
Measuring / setting range	
Probe length L [mm]	132
Environment	
Ambient temperature [°C]	0...65 *)
Maximum vessel pressure [bar]	0.5 (mounted with mounting accessories E43001 - E43007)
Protection	IP 67
Tests / approvals	
Approval	WHG § 19
EMC	EN 61000-4-2 ESD: 15 kV CD / 8 kV AD EN 61000-4-3 HF radiated: 10 V/m EN 61000-4-4 Burst: 2 kV coupling clamp EN 61000-4-6 HF conducted: 10 V (500 Ω AC)
MTTF [Years]	471
Mechanical data	
Materials (wetted parts)	PP-H
Housing materials	PP (polypropylene); TPE / V
Weight [kg]	0.171
Displays / operating elements	

LI2041 - Binary level sensor - eclass: 27371813 / 27-37-18-13

Display	Power LED green Switching status LED yellow Unsafe zone LED red
---------	---

Electrical connection Connection	M12 connector; gold-plated contacts
-------------------------------------	-------------------------------------

<b>Wiring</b> 2 1 3 4 	
--	--

Remarks	
Remarks	*) 0...35 for water and hydrous media
Pack quantity [piece]	1

ifm efector, inc. • 1100 Atwater Drive • Malvern • PA 19355 — We reserve the right to make technical alterations without prior notice. — US — LI2041 — 06.03.2003  
no longer available - archive entryreplaced by: LI2141