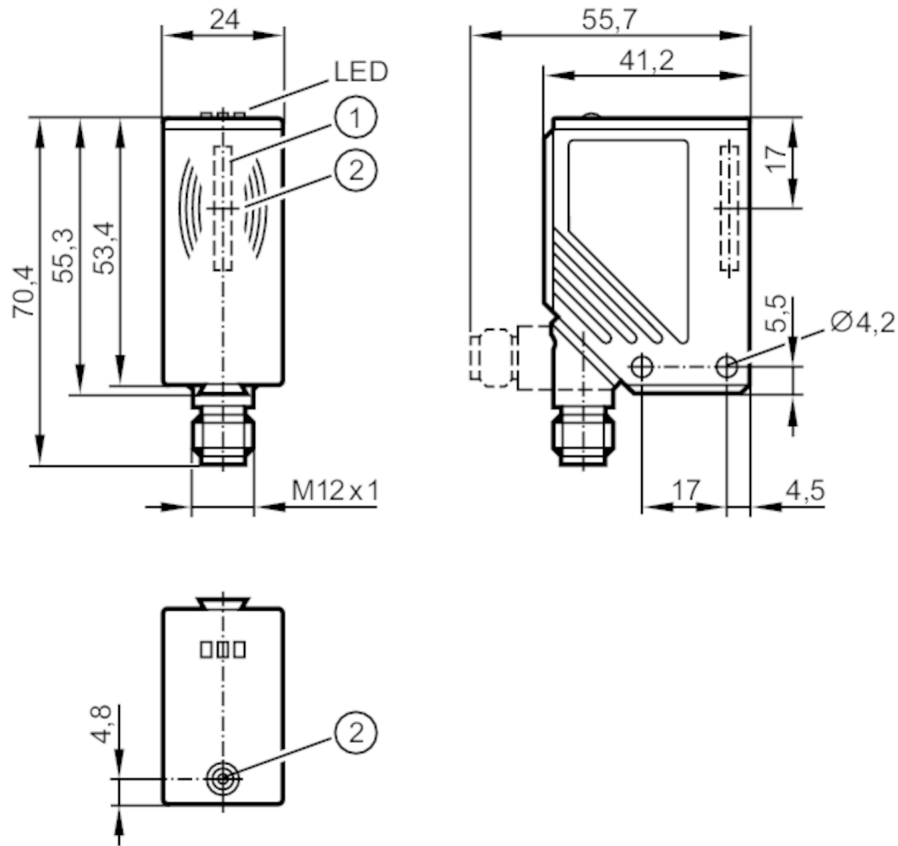


DTA100



RFID read/write antenna with AS-Interface

DTSLF AARWASUS01



- 1 integrated antenna
2 tag position mark middle of the antenna



Application	
Application	Detection of objects on transport equipment
Radio approval for	USA; Canada; EU/RED; Australia; China
Note on radio approval	The list of countries applying the European Radio Equipment Directive 2014/53/EU (RED) can be found under "Downloads".
Electrical data	
Operating voltage [V]	26.5...31.6 DC; (cULus - Class 2 source required)
Current consumption [mA]	< 50
Protection class	III
Operating frequency [MHz]	0,125
Outputs	
Electrical design	AS-i

DTA100



RFID read/write antenna with AS-Interface

DTSLF AARWASUS01

Monitoring range			
Travel speed	[m/s]	< 0.5	
Distance read/read head front		200	
Distance read/read head side		200	
Note on distance read/read head		based on	:
		Read/write antenna	DTA100
		Read head	DTA101
Distance write/read head front	[mm]	400	
Distance write/read head side	[mm]	400	
Note on distance write/read head		based on	:
		Read/write antenna	DTA100
		Read head	DTA101
Distance to the ID tag	[mm]	Reading	≤ 20
		static	
Interfaces			
Communication interface		AS-i	
Operating conditions			
Ambient temperature	[°C]	-20...50	
Storage temperature	[°C]	-25...80	
Protection		IP 67	
Tests / approvals			
EMC		EN 50295	1999-03
Shock resistance		EN 60068-2-29	40 g 6 ms
		EN 60068-2-27	50 g 11 ms
Vibration resistance		EN 60068-2-6	20 g 10...2000 Hz
MTTF	[years]	422	
AS-i classification			
AS-i I/O configuration	[hex]	7	
AS-i ID code	[hex]	4	
AS-i certificate		71501	
Mechanical data			
Weight	[g]	146.5	
Housing		rectangular	
Dimensions	[mm]	55 x 24 x 41	
Material		PA	
Displays / operating elements			
Display		Operating voltage	1 x LED, green
		tag communication	1 x LED, yellow
		error in AS-i data communication	1 x LED, red
Remarks			
Remarks		For the distances to other ID tags see the respective data sheet (E803xx)	
Pack quantity		1 pcs.	
Electrical connection			
Connector: 1 x M12; coding: A			

DTA100



RFID read/write antenna with AS-Interface

DTSLF AARWASUS01



Connection

